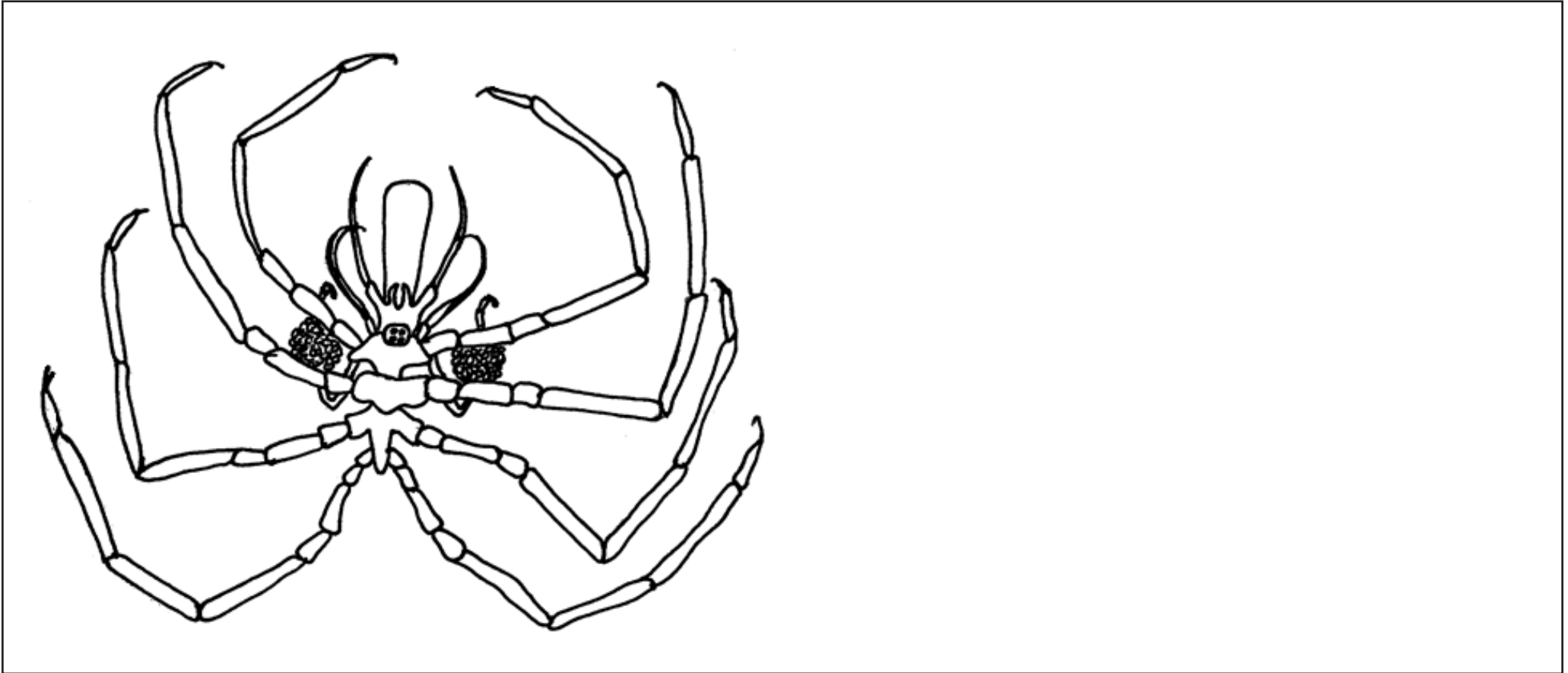


## Diagram of a Sea Spider (Pycnogonid)

Use the descriptions given below for the different parts of the sea spider to help you label the diagram. Draw a straight line to each part, then write the name of the part at the end of the line.



Proboscis- They use them to feed – this allows them to suck nutrients from soft-bodied invertebrates.	Ovigers – used to attach the fertilised eggs to the adult sea spider
Embryos - These are the small baby sea spiders that cling on to the adult sea spider until they are large enough to survive on their own	Chelifores and palps – these structures help the sea spider to eat by cutting off pieces of the prey organism and making them into small bits
Legs – The sea spider has four pairs of legs to enable it to move around	Eyes - They have four of these, though they are not necessary for survival as some species don't have any.

## Diagram of a Sea Spider (Pycnogonid) Answers

